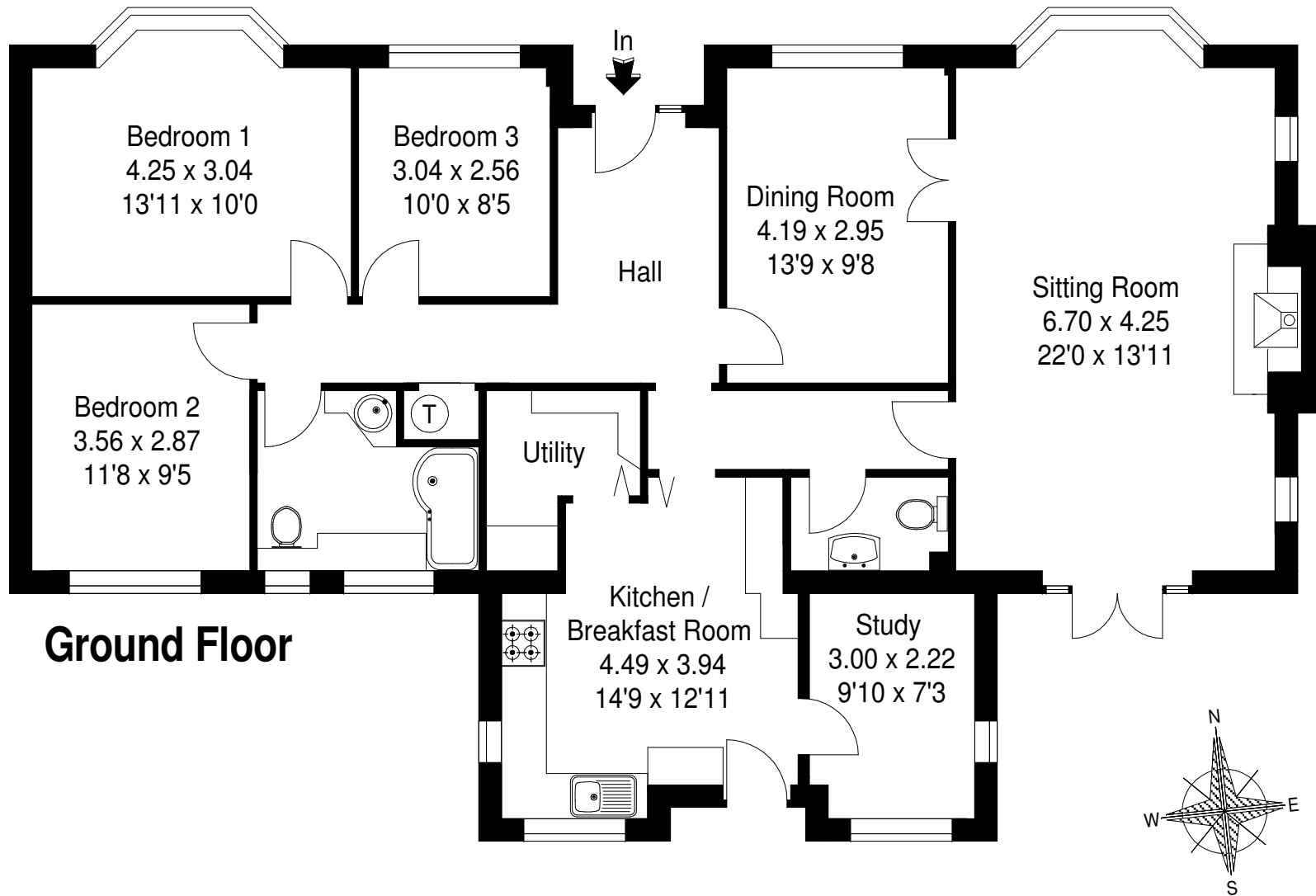


# Berry Down, Green Lane, Stratfield Saye, Berkshire RG7 2EB.

Approximate Gross External Area :- 149 sq m / 1601 sq ft

Approximate Gross Internal Area :- 131 sq m / 1405 sq ft



**Ground Floor**

FLOOR PLANS SOUTHERN Ltd © 2010

01202 766944 Ref S7296/AB

This illustration is for identification purposes only. Measured & drawn in accordance with RICS guidelines. Not drawn to scale, unless stated. Dimensions shown are to the nearest 7.5 cm / 3" and are through cupboard / wardrobes to wall surfaces where possible or where indicated by arrow heads. Whilst every care is taken in the preparation of this plan, please check all dimensions shapes & compass bearings before making any decisions reliant upon them.