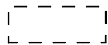
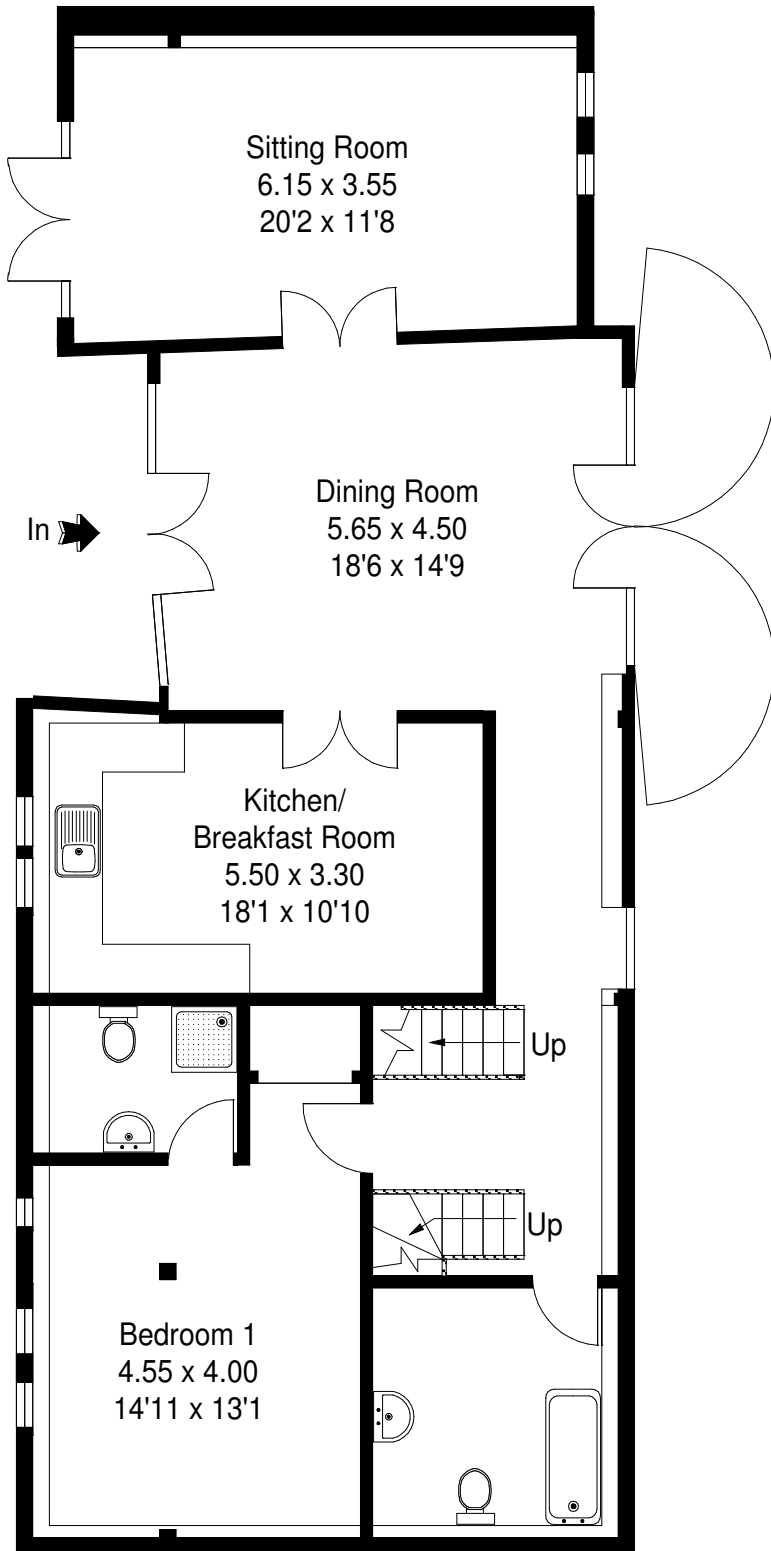
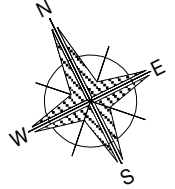


# Long Barn B2, Northern Farm, Over Wallop, Hampshire

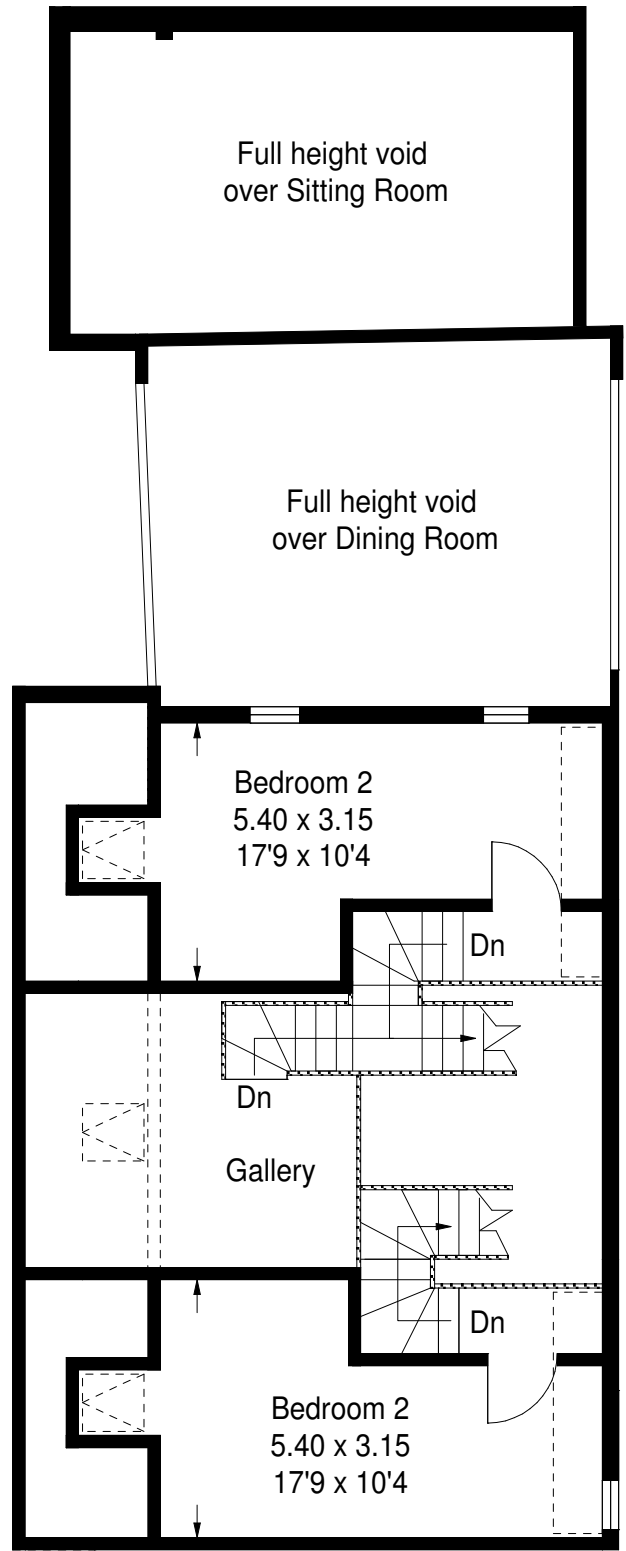
Approximate Gross External Area :- 193 sq m / 2078 sq ft

Approximate Gross Internal Area :- 166 sq m / 1789 sq ft

 = Reduced headroom below 1.5 m / 5'0



**Ground Floor**



**First Floor**

FLOOR PLANS SOUTHERN Ltd © 2009  
01202 766944 Ref S7069/CND

This illustration is for identification purposes only. Drawn in accordance with RICS guidelines.  
Not drawn to scale, unless stated. It has been created using architectural drawings as reference material, therefore the dimensions stated may vary in the completed property.  
Whilst every care was taken in the preparation of this plan, please check all dimensions, shapes & compass bearings before making any decisions reliant upon them.