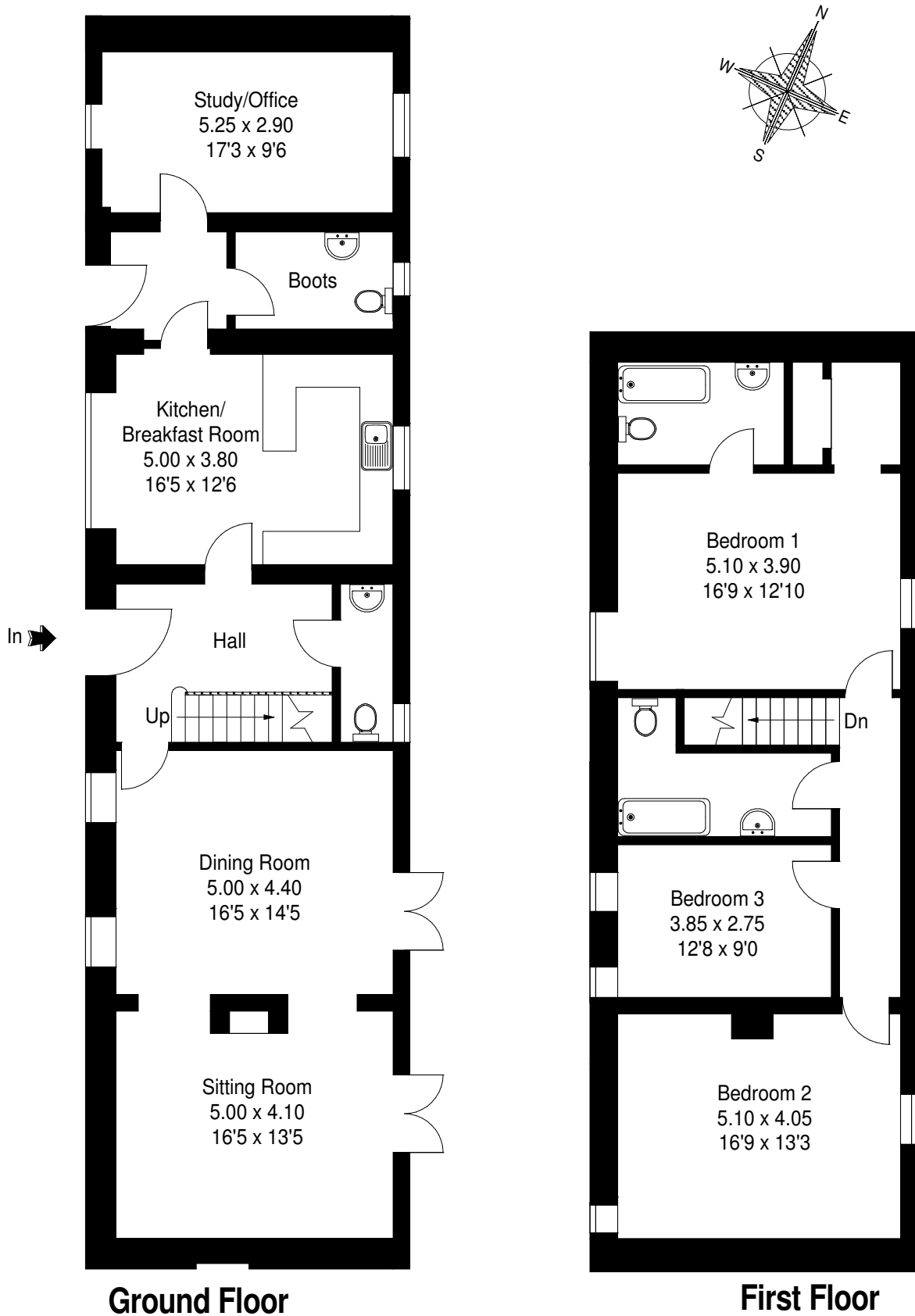


Stable Barn, Northern Farm, Over Wallop, Hampshire

Approximate Gross External Area :- 232 sq m / 2500 sq ft

Approximate Gross Internal Area :- 190 sq m / 2041 sq ft

[---] = Reduced headroom below 1.5 m / 5'0



Ground Floor

First Floor

FLOOR PLANS SOUTHERN Ltd © 2009
01202 766944 Ref S7069/CND

This illustration is for identification purposes only. Drawn in accordance with RICS guidelines. Not drawn to scale, unless stated. It has been created using architectural drawings as reference material, therefore the dimensions stated may vary in the completed property. Whilst every care was taken in the preparation of this plan, please check all dimensions, shapes & compass bearings before making any decisions reliant upon them.